



# COL9A3 Polyclonal Antibody

<b>Catalog No</b>	YP-Ab-16998
<b>Isotype</b>	IgG
<b>Reactivity</b>	Human;Rat;Mouse;
<b>Applications</b>	IHC;IF;ELISA
<b>Gene Name</b>	COL9A3
<b>Protein Name</b>	Collagen alpha-3(IX) chain
<b>Immunogen</b>	The antiserum was produced against synthesized peptide derived from human Collagen IX alpha3. AA range:321-370
<b>Specificity</b>	COL9A3 Polyclonal Antibody detects endogenous levels of COL9A3 protein.
<b>Formulation</b>	Liquid in PBS containing 50% glycerol, 0.5% BSA and 0.02% sodium azide.
<b>Source</b>	Polyclonal, Rabbit,IgG
<b>Purification</b>	The antibody was affinity-purified from rabbit antiserum by affinity-chromatography using epitope-specific immunogen.
<b>Dilution</b>	Immunohistochemistry: 1/100 - 1/300. Immunofluorescence: 1/200 - 1/1000. ELISA: 1/10000. Not yet tested in other applications.
<b>Concentration</b>	1 mg/ml
<b>Purity</b>	≥90%
<b>Storage Stability</b>	-20°C/1 year
<b>Synonyms</b>	COL9A3; Collagen alpha-3(IX) chain
<b>Observed Band</b>	
<b>Cell Pathway</b>	Secreted, extracellular space, extracellular matrix .
<b>Tissue Specificity</b>	Cartilage,Pancreas,Placenta,Skin,
<b>Function</b>	disease:Defects in COL9A3 are the cause of multiple epiphyseal dysplasia type 3 (EDM3) [MIM:600969]; also known as multiple epiphyseal dysplasia with myopathy. EDM is a generalized skeletal dysplasia associated with significant morbidity. Joint pain, joint deformity, waddling gait, and short stature are the main clinical signs and symptoms. EDM is broadly categorized into the more severe Fairbank and the milder Ribbing types.,function:Structural component of hyaline cartilage and vitreous of the eye.,PTM:Covalently linked to the telopeptides of type II collagen by lysine-derived cross-links.,PTM:Prolines at the third position of the tripeptide repeating unit (G-X-Y) are hydroxylated in some or all of the chains.,similarity:Belongs to the fibril-associated collagens with interrupted helices (FACIT) family.,subunit:Heterotrimer of an alpha 1(IX), an alpha 2(IX) and an alpha 3(IX) chain.,
<b>Background</b>	This gene encodes one of the three alpha chains of type IX collagen, the major collagen component of hyaline cartilage. Type IX collagen, a heterotrimeric



molecule, is usually found in tissues containing type II collagen, a fibrillar collagen. Mutations in this gene are associated with multiple epiphyseal dysplasia type 3. [provided by RefSeq, Jan 2010],

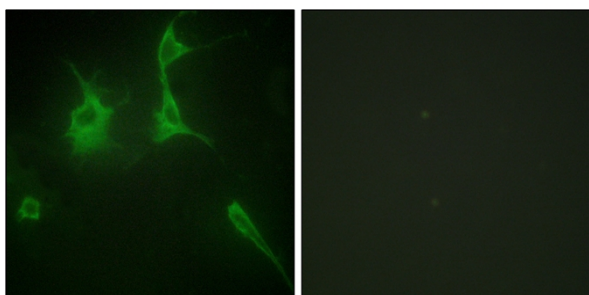
**matters needing attention**

Avoid repeated freezing and thawing!

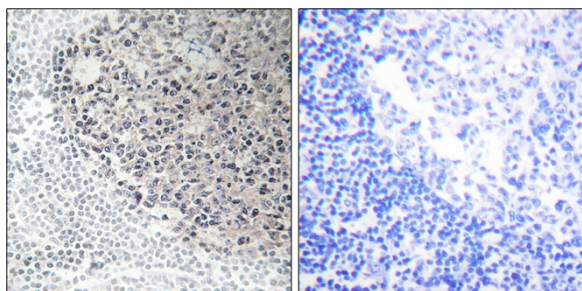
**Usage suggestions**

This product can be used in immunological reaction related experiments. For more information, please consult technical personnel.

**Products Images**



Immunofluorescence analysis of NIH/3T3 cells, using Collagen IX alpha3 Antibody. The picture on the right is blocked with the synthesized peptide.



Immunohistochemistry analysis of paraffin-embedded human tonsil tissue, using Collagen IX alpha3 Antibody. The picture on the right is blocked with the synthesized peptide.